

# EXHIBIT C: 2018 GYA Challenge Cup Distance Race Courses

## Course 1 - 23.08NM

Leg	Heading	Distance	Rounding
Start to Inbound	140°	4.29NM	Port
Inbound to USCG Piling	67°	2.57NM	Starboard
Piling to ICW 4	158°	2.35NM	Port
ICW 4 to Biloxi 1	31°	5.22NM	Port
Biloxi to Finish	270°	8.65NM	



## Course 2 - 30.23NM

Start to J	119°	11.52NM	Starboard
J to Outbound Range	251°	5.98NM	Starboard
Outbound to ICW 4	27°	3.52NM	Port
ICW 4 to USCG Piling	338°	2.35NM	Port
Piling to Inbound Range	247°	2.57NM	Starboard
Inbound to Finish	320°	4.29NM	



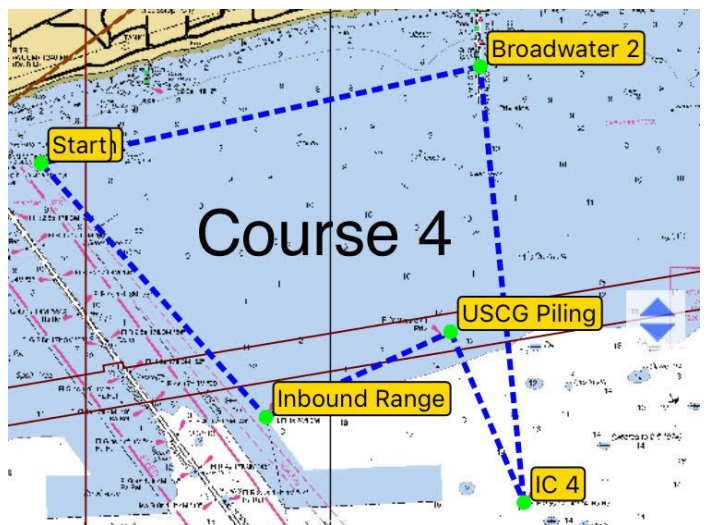
## Course 3 - 16.67NM

Start to ICW 4	127°	7.46NM	Port
ICW 4 to USCG Piling	338°	2.35NM	Port
Piling to Inbound Range	247°	2.57NM	Starboard
Inbound to Finish	320°	4.29NM	



## Course 4 - 20.43NM

Start to Inbound	140°	4.29NM	Port
Inbound to USCG Piling	67°	2.57NM	Starboard
Piling to ICW 4	158°	2.35NM	Port
ICW 4 to Broadwater 2	356°	5.54NM	Port
Broad 2 to Finish	259°	5.68NM	



## Waypoints

Start/Finish	089°04.226'W	30°21.321'N
Biloxi 1	088°54.211'W	30°21.589'N
Broadwater 2	088°57.815'W	30°22.517'N
IC 4	088°57.161'W	30°17.027'N
Inbound Range	089°00.935'W	30°18.108'N
J	088°52.420'W	30°15.944'N
Outbound Range	088°58.897'W	30°13.844'N
USCG Piling	088°58.234'W	30°19.188'N

